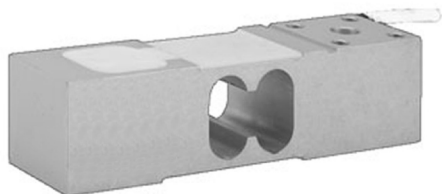


# Aluminum Medium Capacity Single Point Load Cell


**ATEX**

**FM**

## FEATURES

- Capacities 50 - 250kg
- Aluminum construction
- Single point 400 x 400mm platform
- OIML R60 and NTEP approved
- IP66 protection
- Available with metric and UNC threads

## OPTIONAL FEATURES

- EEx ia IIC T4 hazardous area approval
- FM approval available

## DESCRIPTION

Model 1242 is a high accuracy, low profile, low cost, two beam, single point load cell ideally suited for industrial application where space is limited. Typical applications include platforms, hanging scales and personal weighers.

This high accuracy load cell is OIML R60 class C6 approved. For hazardous environments this load cell has EEx ia IIC T4 level of approval, as well as Factory Mutual approval.

A special humidity resistant protective coating assures long term stability over the entire compensated temperature range.

The two additional sense wires feed back the voltage reaching the load cell. Complete compensation of changes in lead resistance due to temperature change and/or cable extension can be achieved by feeding this voltage into the appropriate electronics.

## APPLICATIONS

- Small platforms
- Hanging scales
- Personal scales

## OUTLINE DIMENSIONS in millimeters

