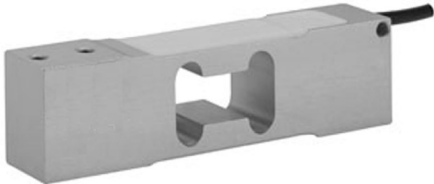


Low Profile Aluminum Load Cell



- FEATURES**
- Capacities 1- 250kg
  - Aluminum construction
  - Single point 400 x 400mm platform
  - OIML R60 and NTEP approved
  - IP66 protection
  - Available with metric and UNC threads

- OPTIONAL FEATURES**
- EEx ia IIC T4 hazardous area approval
  - FM approval available

DESCRIPTION

Model 1042 is a low profile single point load cell designed for direct mounting of low cost weighing platforms.

Its small physical size, combined with high accuracy and low cost, makes this load cell ideally suited for retail, bench and counting scales.

Capacities of 5kg and above are supplied as standard in anodized aluminum. This high accuracy load cell is approved to NTEP and other stringent approval standards, including OIML R60.

A humidity resistant protective coating assures long term stability over the entire compensated temperature range.

The two additional sense wires feed back the voltage reaching the load cell. Complete compensation of changes in lead resistance due to temperature change and/or cable extension, is achieved by feeding this voltage into the appropriate electronics.

APPLICATIONS

- Bench scales
- Counting scales
- Grocery scales

OUTLINE DIMENSIONS in millimeters

Capacity, kg	A
1 - 30	20
50 - 250	25.4

